

Delta Unifence Kit Installation Instructions

Please note this installation kit is designed for installation on the Delta Commercial Unifence (units made between 1990 and 1993). Accurate Technology manufactures kits for other sliding table saw fences in which some or all of the components may be different. For more information about ProKits™ feel free to contact Accurate Technology.

SAFETY WARNING

To avoid injury: Before installing ProScale on a machine, turn off the machine and disconnect it from its power source.

Warranty

Accurate Technology, Inc., warrants ProKit systems against defective parts and workmanship, commencing from the date of original purchase. Upon notification of a defect, Accurate Technology, Inc. shall have the option to repair or replace any defective part. Such services shall be the customer's sole and exclusive remedy. Expenses incidental to repair, maintenance, or replacement under warranty, including those for labor and material, shall be borne by Accurate Technology, Inc.

Except as expressly provided in this warranty, Accurate Technology, Inc., does not make any warranties with respect to the product, either expressed or implied, including implied warranties of merchantability or fitness for a particular purpose, except as expressly provided in this agreement.

Accurate Technology, Inc., shall not be liable for any special, incidental, or consequential damages or for loss, damage or expense directly or indirectly arising from the customer's use of or inability to use the equipment either separately or in combination with other equipment, or for personal injury or loss or destruction of other property, or from any other cause.

Tools Required

- Set of clamps
- Phillips screwdriver
- Allen wrench set
- Marking pen
- Center punch
- Tap Handle

Please note that some of the parts for this installation kit may have been pre-assembled for your convenience by Accurate Technology.

READ THROUGH ALL INSTRUCTIONS BEFORE BEGINNING INSTALLATION

Digital Scale:



Readhead:



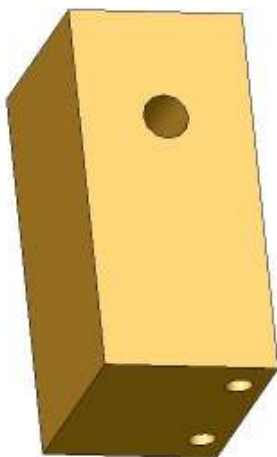
Guide Clip:



Digital Display:
(ProKit models use a grey housing)



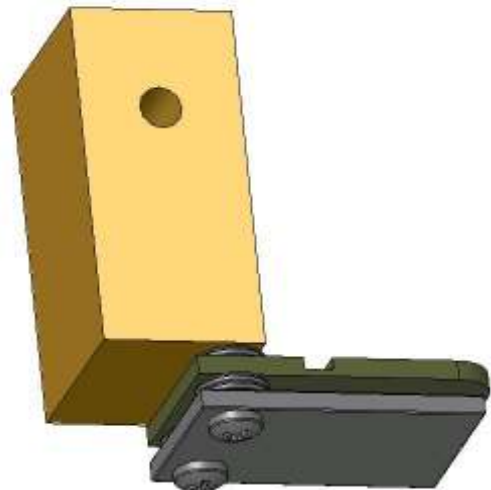
Mounting Block:



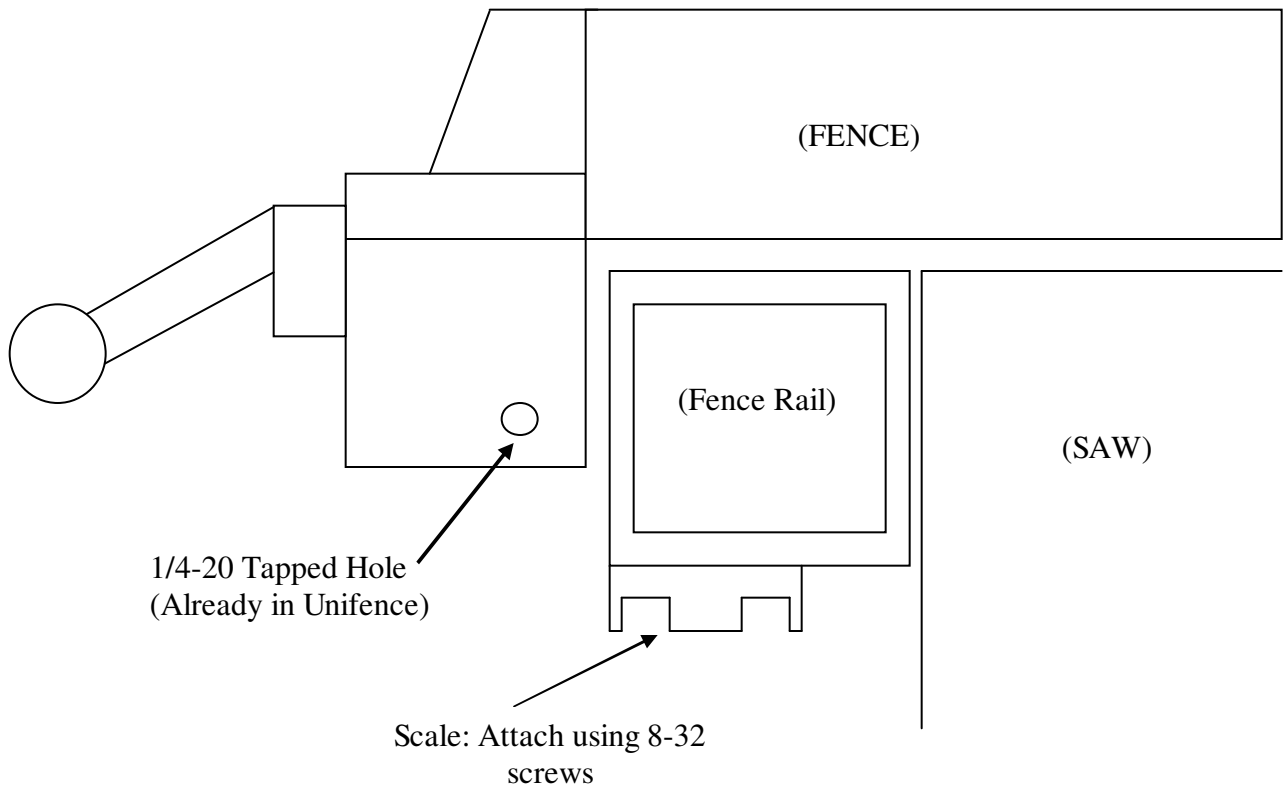
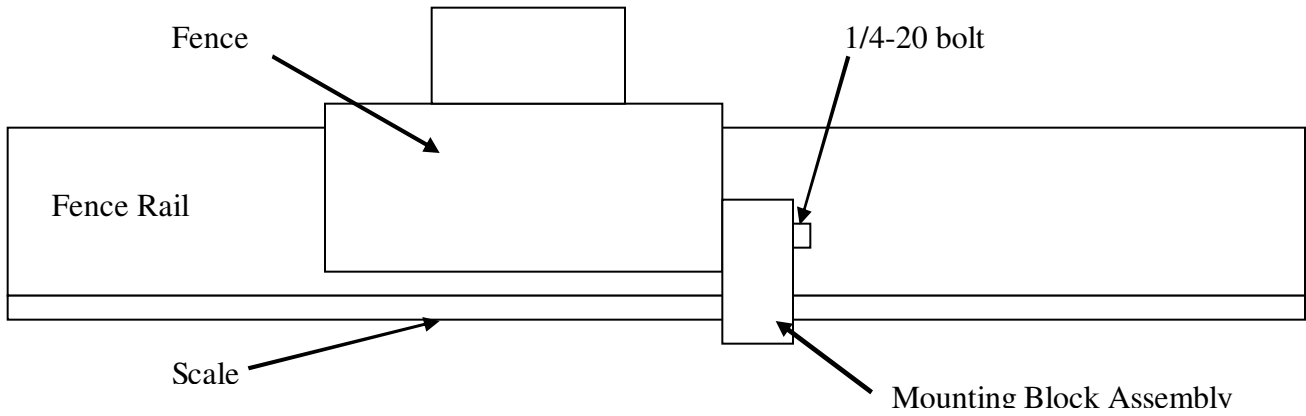
Clip Protector:



Mounting Block Assembly:



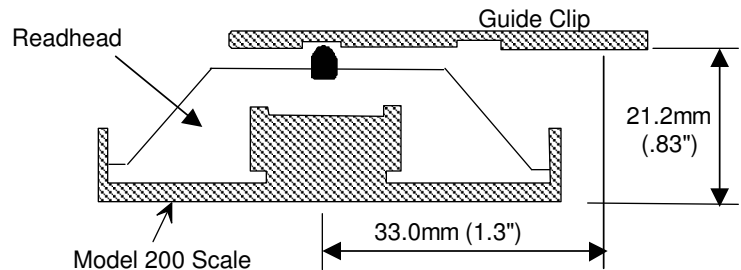
1. Attach the mounting block assembly to the fence using the supplied 1/4-20 x 2" bolt (see figures).



2. Slide the readhead onto the scale if it has been removed.
Note: The readhead has some sensitive internal ground fingers; use caution so these are not damaged.
3. Position the scale such that the spherical post on the readhead is centered in the guide clip slot. Mark the scale's hole positions.
4. Drill and tap holes in the fence at the marked locations. Be sure the holes go completely through the metal. Remove any burrs.

5. Attach the scale to the fence's extrusion using 8-32 screws.

6. Check the flex of the guide clip on the readhead over the full range of fence travel. The guide clip should hold the readhead



firmly and allow it to slide smoothly over the length of the fence when the stop is moved. Adjust the spacing between the readhead and the guide clip using washers and spacers as needed. Use the diagram as a reference. (The pressure on the readhead is very important. Too much pressure will damage the readhead and scale. Too little pressure will cause accuracy problems.) Verify the guide clip engages the readhead over the fence's full range of travel. Make necessary adjustments now.

7. Attach one side of the hinge to the digital display using the supplied 4-40 screws. Position the display as desired. Mount the hinge using foam tape, Velcro, or #8 screws. (To mount the display using the #8 screws, a drill and tap for 8-32 screws is needed.)
8. Plug the readhead into the display and turn on the display. Be sure to route the cable so it will not catch on any equipment and damage the measuring system.
9. Move the fence left and right. The display should read small numbers near the saw blade and large numbers away from the blade. If the readings are backwards, consult the Operation Manual for more information.
10. With the fence **locked in position** near the saw blade, cut a small square board.
11. Measure this board with the most precise measuring tool available (preferably digital calipers) and write down the measurement.
12. Press the ZERO key on the ProScale display.
13. Use the PLUS key to enter the measured value into the ProScale display.
14. Press and hold the ON/OFF button. Momentarily press the MODE button. Release the ON/OFF button. The keyboard is now LOCKed. It can be unLOCKed by repeating this procedure.
15. ProScale should be re-calibrated when the saw blade is changed (kerf allowance).

Troubleshooting:

ProScale is accurate close to the saw blade, but not accurate at larger distances:

- ❑ Check the alignment of the saw fence. The alignment *will* affect the measurements at larger distances.
- ❑ Also be sure to check the mounting of all components. Any loose bolts can allow for “slop” measurements.

ProScale resets itself while saw is running and the fence is locked:

- ❑ Be sure the ABS/INC key (if equipped) has not been accidentally pressed. If so, press and hold for 3 seconds to return to ABS reading.
- ❑ The display has been accidentally reset. Large voltage spikes from nearby motors, inverters, or dust collection systems can cause this. Be sure that all devices are properly grounded.
- ❑ Extreme vibration may cause this. Mount the display in a different location.

ProScale resets itself while the saw is not running and the fence is locked:

- ❑ Be sure the ABS/INC key (if equipped) has not been accidentally pushed. If so, press and hold for 3 seconds to return to ABS reading.
- ❑ Be sure the ZERO key has not been accidentally pushed (when displayed is unlocked). If so, you will need to recalibrate. Be sure to LOCK the display.

ProScale display reads ERR 2 or “No Enc”:

- ❑ Make sure the connector is fully inserted into the display. Also, be sure the readhead is on the scale. To clear the error, simply unplug the readhead for one second and re-insert the connector to the display. You will need to recalibrate.
- ❑ The fence has been moved too quickly. To clear the error, simply unplug the readhead for one second, then re-insert. You will need to recalibrate.

How do I know when to change my batteries?

- ❑ A low battery indicator will light in the lower left corner of your display. ProScale uses two standard AA alkaline cells. To change the batteries, unscrew the top cover (two screws) and remove old batteries. Be sure to avoid touching the brass battery contacts as much as possible. These are specially designed to be loose while you are changing batteries-**do not attempt to bend them.**

My problem is not listed-where do I get help?

- ❑ Read through all the manuals for answers to commonly asked questions.
- ❑ Check Accurate Technology's web site (www.proscale.com) for information.
- ❑ Contact Accurate Technology at 828-654-7920. Have your ProKit information ready when calling (machine model, part number, date of purchase, and point of purchase).
- ❑ E-mail our service department at customerservice@accurate-technology.com.